

# ANYCLOUD BACKUP FOR 365 ↑↓

---

Backup of Microsoft 365 data

**any.cloud**

# Anycloud Backup for 365


*Combines security, compliance, and data protection in a secure solution in IBM Cloud*

Anycloud Backup for 365 is a partner-ready SaaS offering for data protection delivered by Anycloud and is created with the intent to safely back up data and restore.


The purpose of Anycloud Backup for 365 is to provide a secure backup of data stored within the main services including Exchange Online, OneDrive for Business, SharePoint, and Teams for end-users.

## Why backup Microsoft 365 data?

Backing up Microsoft 365 data is a critical component of a comprehensive data protection strategy, ensuring business continuity and safeguarding data against digital threats. So why backup Microsoft 365 data?

**Safeguard against those 'oops' moments** 


Ensure that an unintended click doesn't spell disaster for your crucial data. Backups provide a safety net to recover quickly from accidental deletions.

**Defend against internal security threats** 

Don't let rouge employees or internal mishaps compromise your data integrity. Regular backups act as your internal line of defense.

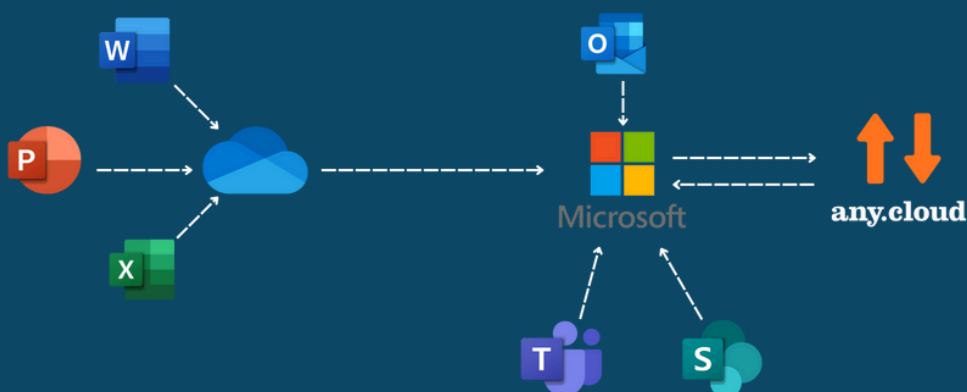
**Stay on the right side of compliance** 

Ensure you're always audit-ready and compliant with industry regulations by keeping comprehensive and accessible backups of your data.

**Safeguard against external cyber threats** 

Ransomware and malware are lurking at every corner. Secure data with backups to swiftly restore critical data and neutralize cyberattacks.

## What does ACB365 backup?



## Web portal for management and restore

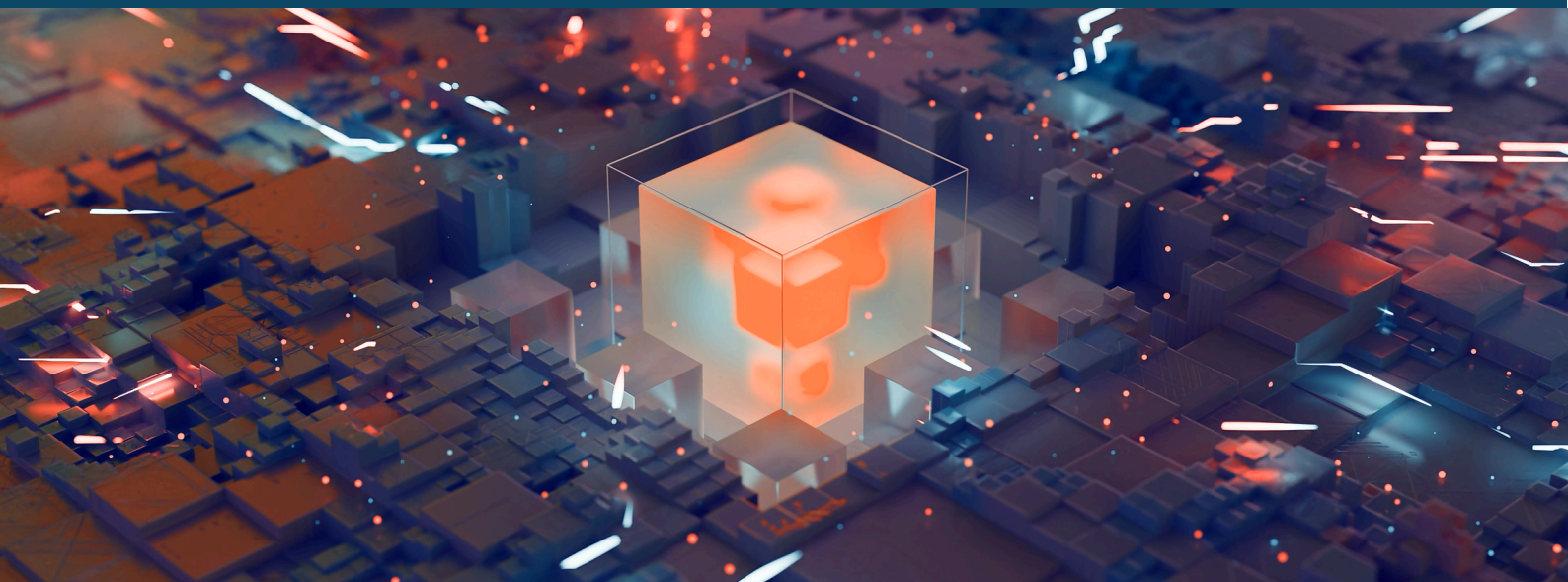
Anycloud Backup for 365 has a simple-to-use intuitive web interface consisting of three portals: Management portal, Restore portal and Self-Service Restore portal.

The Management portal is for administration of all organizational data and is where backups are scheduled. It is also in the management portal where retention periods are chosen 1, 2, 3, 5, 7, 10 and 25 years all with unlimited storage. The Restore portal is from where backups can be retrieved and restored. With granular restore capabilities, data can be restored either as single items or complete objects. The Self-Service Restore portal is where end users can restore from their own mailbox and OneDrive without relying on the IT department.

### WEB PORTAL FOR MANAGEMENT AND RESTORE

## Technical specifications

- ✓ Anycloud Backup for 365 has a 99,9% SLA uptime
- ✓ Strong AES256-bit data encryption whenever data is in transit
- ✓ Up to 25 years of retention with unlimited storage
- ✓ Fully supports 'Right to be forgotten' GDPR regulation
- ✓ Combines security, compliance, and data protection in a secure solution in IBM Cloud
- ✓ Automated backup jobs configured to meet customers' RTO and RPO
- ✓ Secure backup data at-rest, in IBM Cloud and protect from insider malicious attacks via 30 days undelete ITP feature inside the portal



## ACB365 features

- helping you secure Microsoft 365 data



Built on IBM technology



Choose between multiple IBM data locations



Up to 25 years retention included



Air-gapped and Segregation of duties (SoD)



Self-service portal



Unlimited storage



Fully supports "right-to-be-forgotten" in retention



Easy access to support with ticket system from inside the portal (multi language)



Insider Threat Protection (ITP). A feature that fully protects data from malicious/accidental insider deletion for 30 days.

### Knowledge base & Changelog

The knowledge base is created for you to find all the answers you might have about our ACB365 service. We have made it easy for you to search for any ACB365 articles, errors, video guides and much more to help you find the solution to an issue. In addition, the changelog is divided into API, management- and restore portal, where you can find all the latest updates.

[> Go to knowledge base](#)

# Compliance



Anycloud Backup for 365 is developed by Anycloud, and the service is built with the center focus of supporting the regulations within General Data Protection Regulation and industry security standards. The technologies used are compliant as data is encrypted and once data is placed in the chosen datacenter it stays there. Data security is the priority, and the service is delivered in multiple IBM data centres across the globe following a tier-system to ensure resilience and redundancy for maximum protection.

In addition, we deliver a feature that supports the “right to be forgotten” -act for your end-customers, which offers the unique possibility to delete specific users and their personal data.

## DELIVER NEXT-LEVEL COMPLIANCE

- ✓ Deliver a true cloud-to-cloud backup by separating data from Microsoft environments to IBM datacenters and thereby provide segregation of duties. This brings enhanced security by avoiding dependence on a single provider.
- ✓ Bring geographical redundancy to end-customers by storing data in three local datacenters with IBM COS Regional and simultaneous storage in multiple locations providing data resilience.

## Datacenter locations

**AUSTRALIA**  
SYDNEY

**BRAZIL**  
SAO PAULO

**CANADA**  
MONTREAL  
TORONTO

**FRANCE**  
PARIS

**NETHERLANDS**  
AMSTERDAM

**GERMANY**  
FRANKFURT

**INDIA**  
CHENNAI

**ITALY**  
MILAN

**JAPAN**  
TOKYO

**SINGAPORE**

**SPAIN**  
MADRID

**UNITED KINGDOM**  
LONDON

**USA**  
CALIFORNIA, SAN JOSÈ  
TEXAS DALLAS   
WASHINGTON D.C.



These data centers are 100% CO2-friendly, powered by renewable energy. This is achieved through Renewable Electricity Certificates (RECs), ensuring every unit of electricity used is matched by renewable energy production, reducing your carbon footprint.

**LET'S STAY CONNECTED**

---

**Anycloud A/S**  
Hedegaardsvej 88  
2300 Copenhagen S  
Denmark

CVR: DK31161509  
E-mail: [sales@anycloud.dk](mailto:sales@anycloud.dk)

**any.cloud**